



06

# WALL MOUNTED ACCESSORIES

Wall mounted accessories are essential for keeping your bathroom clutter free. Our stylish range offers a variety of fixing methods and some products can even be installed without drilling through tiles.



# WALL MOUNTED ACCESSORIES

## WIRE BATHROOM STORAGE - MILD STEEL

### MILD STEEL STORAGE

- Universal storage
- Provides valuable additional storage space
- Durable chrome plated mild steel
- All fixings included

- Incorporating a special treatment, the rust free wire-ware products are suitable for use within any area of the bathroom and all come with a limited five year guarantee against corrosion\*.



\*Please see [www.croydex.com/terms-and-conditions](http://www.croydex.com/terms-and-conditions) for more details on the rust free five year guarantee.



### WALL MOUNTED CURVED SHELVING UNIT & TOWEL RACK

- Two shelves and two towel rails
- Chrome finish
- Saves space and creates additional storage
- Simple self-assembly
- All fixings included
- Maximum load: 5kg



**CODE** DIMENSIONS (HXWXD)  
QM262041 543 x 450 x 255mm

Packaging: White box with colour label

### WALL MOUNTED TOWEL RACK

- Two towel rails and one towel shelf
- Chrome finish
- Space saving design and organised
- Simple self-assembly with all fixings included
- Maximum load: 5kg



**CODE** DIMENSIONS (HXWXD)  
QM261841 300 x 630 x 215mm

Packaging: White box with colour label

# WALL MOUNTED ACCESSORIES

## WIRE BATHROOM STORAGE - MILD STEEL

### OVER DOOR JEWEL MULTI HOOK

- Eight hooks
- Easy to install - no drilling or fixing required
- Durable chrome plated steel and acrylic resin



**CODE** DIMENSIONS (HXWXD)  
QM260341 190 x 380 x 75mm

Packaging: Backing card with euro slot.

### OVER DOOR BALL HOOK - PACK OF TWO

- Easy to install - no drilling or fixing required
- Designed to fit doors up to 40mm thick
- Durable chrome plated steel
- Maximum load: 8kg



**CODE** DIMENSIONS (HXWXD)  
QM260041 190 x 14 x 60mm

Packaging: Backing card with euro slot.

### OVER DOOR JEWEL HOOK - PACK OF TWO

- Easy to install - no drilling or fixing required
- Durable chrome plated steel and acrylic resin
- Designed to fit doors up to 40mm thick
- Maximum load: 8kg



**CODE** DIMENSIONS (HXWXD)  
QM260741 190 x 14 x 60mm

Packaging: Backing card with euro slot.

### HOOK OVER DOOR TOWEL RACK

- Smart, modern towel rack with self-adhesive pod to secure in place
- Easy to install fixing options:
  - Self-adhesive pod, supplied or
  - Screw to the wall or door
- Space for four towels
- Creates valuable additional storage space in the bathroom
- Durable chrome plated steel
- Designed to fit doors up to 40mm thick
- Maximum load: 2.5kg



**CODE** DIMENSIONS (HXWXD)  
QM261141 710 x 200 x 140mm (D from door to front edge)

Packaging: Card wrap with polypropylene hook

### TOILET ROLL HOLDER

- Free standing toilet roll holder
- Chrome plated finish
- Holds three spare toilet rolls



**CODE** DIMENSIONS (HXWXD)  
QM263941 613 x 132 x 143mm

Packaging: Swing tag with euro slot.

### OVER DOOR BALL MULTI HOOK

- Eight hooks
- Easy to install - no drilling or fixing required
- Durable chrome plated steel
- Designed to fit doors up to 40mm thick
- Maximum load: 8kg



**CODE** DIMENSIONS (HXWXD)  
QM260141 190 x 380 x 75mm

Packaging: Backing card with euro slot

### HOOK OVER DOOR DOUBLE STORAGE BASKET

- Simple & contemporary metal baskets with self-adhesive pad to secure the baskets in place
- Easy to install fixing options:
  - Self-adhesive pad, supplied or
  - Screw to the wall or door
- Two spacious storage baskets
- Durable chrome plated steel
- Designed to fit doors up to 40mm thick
- Maximum load: 4kg



**CODE** DIMENSIONS (HXWXD)  
QM261241 710 x 243 x 179mm

Packaging: Card wrap with polypropylene hook

### BATH RACK

- Fits most standard 70cm wide baths
- Durable chrome plated mild steel
- Easy to install - no drilling required



**CODE** DIMENSIONS (HXWXD)  
QM266041 45 x 650 x 135mm

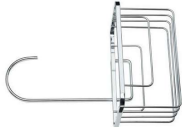
Packaging: Card wrap with euro slot.

## WALL MOUNTED ACCESSORIES

WIRE BATHROOM STORAGE - MILD STEEL

### SHOWER RISER RAIL HOOK OVER CADDY

- Contemporary hook over shower caddy with self-adhesive pad to secure caddy in place
- Creates valuable additional storage space in the shower
- Fits most standard riser rails
- Easy to install - no drilling required
- Durable chrome plated steel
- Maximum load: 2kg



CODE DIMENSIONS (H X W X D)

QM260441 280 x 180 x 130mm

Packaging: Backing card with euro slot.

### SHOWER SCREEN CADDY

- Creates valuable additional storage space in the shower
- Fits most standard shower screens
- Easy to install - no drilling required
- Durable chrome plated steel
- Maximum load: 2kg



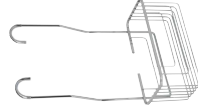
CODE DIMENSIONS (H X W X D)

QM264141 373 x 250 x 130mm

Packaging: Swing tag

### SHOWER MIXER CADDY

- Hooks onto the shower mixer
- Creates valuable additional storage space in the shower
- Easy to install - no drilling required
- Durable chrome plated steel
- Maximum load: 5kg



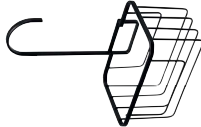
CODE DIMENSIONS (H X W X D)

QM262941 440 x 250 x 125mm

Packaging: Colour card wrap

### MATT BLACK HOOK OVER SHOWER CADDY

- Matt black powder coated mild steel
- Self-adhesive pad to secure the caddy in place
- Hooks over most standard riser rails
- Spacious storage basket creates valuable additional storage space in the shower
- Easy to install - no drilling or screw fixings required
- Maximum load: 2 kg



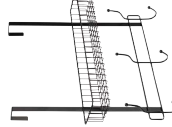
CODE DIMENSIONS (H X W X D)

QM260421 280 x 180 x 130mm

Packaging: Backing card with euro hook

### MATT BLACK LARGE HOOK OVER SHOWER CADDY

- Matt black powder coated mild steel
- Hooks over shower screens
- Deep basket to hold shower toiletries
- Three double hooks for additional hanging space
- Creates valuable additional storage space in the shower
- Easy to install - no drilling or screw fixings required
- Maximum load 4kg



CODE DIMENSIONS (H X W X D)

QM262121 450mm x 423mm x 155mm

Packaging: Backing card with euro hook

### TELESCOPIC TRIPLE CORNER STORAGE BASKET

- Made from strong satin anodised aluminium with polypropylene baskets
- Adjustable telescopic rod with spring tension for secure fit
- Ideal for the corner of the bath or shower enclosure
- Creates valuable additional shower space
- Easy to install
- Three adjustable height storage baskets
- Extends from 840mm to 2400mm
- Maximum weight per shelf is 1.5kg (3.3lbs)



CODE DIMENSIONS (H X W X D)

PM40100 2400 x 250 x 165mm

Packaging: Full colour box

## WALL MOUNTED ACCESSORIES

WIRE BATHROOM STORAGE - MILD STEEL

### TRIPLE CORNER STORAGE BASKET SET

- Ideal for the corner of the bath or shower enclosure
- Three adjustable storage baskets
- Creates valuable additional storage space
- Adjustable wall brackets allow for uneven walls
- Easy to install, adhesive pad fixings supplied
- Durable chrome plated steel
- Maximum load: 4.5kg



CODE DIMENSIONS (H X W X D)

QM261341 1615 x 270 x 185mm

Packaging: Box with euro slot.

### EASY FIT SHOWER RISER RAIL SOAP BASKET

- Easy to fit clip on system requires no drilling
- Will fit most round shower riser rails with a diameter between 19 and 25mm
- Can be easily removed and fitted to another compatible shower riser rail
- Durable chrome plated steel
- Maximum load: 2kg



CODE DIMENSIONS (H X W X D)

QM261441 35 x 170 x 120mm

Packaging: White box with colour label

### EASY FIT SHOWER RISER RAIL BASKET

- Easy to fit clip on system requires no drilling
- Will fit most round shower riser rails with a diameter between 19 and 25mm
- Can be easily removed and fitted to another compatible shower riser rail
- Deep basket ideal for larger bottles
- Durable chrome plated steel
- Maximum load: 2kg

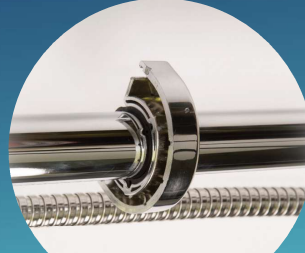


CODE DIMENSIONS (H X W X D)

QM261041 85 x 265 x 155mm

Packaging: White box with colour label

### EASY FIT BASKET INSTALLATION



#### STEP 1.

Locate the desired height of the basket on the riser rail & attach the support bracket by twisting it around onto the riser rail.



#### STEP 2.

Fit the top lip of the basket onto the support bracket and click it securely into place.



#### STEP 3.

Attach the support bracket caps.

# WALL MOUNTED ACCESSORIES

## WIRE BATHROOM STORAGE - MILD STEEL



### MILD STEEL STORAGE

#### Screw to wall storage

- Provides valuable additional storage space
- Durable chrome plated mild steel
- All fixings included
- Incorporating a special treatment, the rust free wire-ware products are suitable for use within any area of the bathroom and will come with a limited five year guarantee against corrosion\*.



\*Please see [www.croydex.com/terms-and-conditions](http://www.croydex.com/terms-and-conditions) for more details on the rust free five year guarantee.

### SOAP DISH

- Screw to wall fixings included
- Wall plugs and screws included
- Maximum load: 2kg



CODE	FINISH	DIMENSIONS (HXWXD)
QM261941	Chrome	36.5 x 127 x 103mm

Packaging: Card wrap and euro slot

### CORNER SOAP DISH

- Screw to wall fixings included
- Wall plugs and screws included
- Maximum load: 2kg



CODE	FINISH	DIMENSIONS (HXWXD)
QM260941	Chrome	36 x 190 x 120mm

Packaging: Card wrap and euro slot.

### COSMETIC BASKET

- Screw to wall fixings included
- Wall plugs and screws included
- Maximum load: 5kg



CODE	FINISH	DIMENSIONS (HXWXD)
QM260641	Chrome	51.5 x 250 x 125mm

Packaging: Card wrap and euro slot

### CORNER BASKET

- Screw to wall fixings included
- Wall plugs and screws included
- Maximum load: 5kg



CODE	FINISH	DIMENSIONS (HXWXD)
QM265941	Chrome	61 x 280 x 165mm

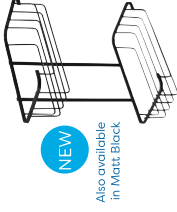
Packaging: Card wrap and euro slot

# WALL MOUNTED ACCESSORIES

## WIRE BATHROOM STORAGE - MILD STEEL

### TWO TIER COSMETIC BASKET

- Screw to wall fixings included
- Wall plugs and screws included



**NEW**

Also available in Matt Black

- Maximum load: 5kg



CODE	FINISH	DIMENSIONS (HXWXD)
QM260541	Chrome	316 x 250 x 128mm
QM260521	Matt Black	316 x 250 x 128mm

Packaging: Card wrap and euro slot

### SMALL TWO TIER CORNER BASKET

- Screw to wall fixings included
- Wall plugs and screws included
- Maximum load: 5kg
- Additional hooks for hanging items.

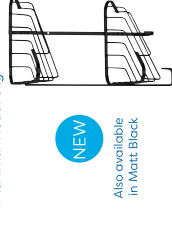


CODE	FINISH	DIMENSIONS (HXWXD)
QM260841	Chrome	281 x 225 x 140mm

Packaging: Card wrap and euro slot

### TWO TIER CORNER COSMETIC BASKET

- Screw to wall fixings included
- Wall plugs & screws included
- Maximum load: 5kg
- Additional hooks for hanging items.



**NEW**

Also available in Matt Black



CODE	FINISH	DIMENSIONS (HXWXD)
QM260241	Chrome	327 x 250 x 147mm
QM260221	Matt Black	327 x 250 x 147mm

Packaging: Card wrap and euro slot

### LARGE TWO TIER CORNER BASKET

- Screw to wall fixings included
- Wall plugs and screws included
- Maximum load: 5kg



CODE	FINISH	DIMENSIONS (HXWXD)
QM263941	Chrome	305 x 275 x 165mm

Packaging: Card wrap and euro slot

### THREE TIER CORNER BASKET

- Screw to wall fixings included
- Wall plugs and screws included
- Maximum load: 5kg
- Additional hooks for hanging items.



CODE	FINISH	DIMENSIONS (HXWXD)
QM262841	Chrome	482 x 280 x 165mm

Packaging: Card wrap and euro slot

### HOOK OVER THREE TIER BASKET

- Maximum load: 5kg
- Additional hooks for hanging items.



CODE	FINISH	DIMENSIONS (HXWXD)
QM264341	Chrome	632 x 250 x 184mm

Packaging: Card wrap and euro slot

## WALL MOUNTED ACCESSORIES

WIRE BATHROOM STORAGE - STAINLESS STEEL

### STAINLESS STEEL STORAGE

#### Screw to wall storage

- Provides valuable additional storage space
- Durable chrome plated corrosion-resistant, stainless steel
- Suitable for use within the wet shower area
- All fixings included
- Incorporating a high quality chrome finish on stainless steel, the wire storage products are suitable for use within any area of the bathroom and all come with a limited ten year guarantee against corrosion.\*\*

**RUST FREE**  
TEN YEAR GUARANTEE

\*\*Please see [www.croydex.com/terms-and-conditions](http://www.croydex.com/terms-and-conditions) for more details on the rust free ten year guarantee.



## WALL MOUNTED ACCESSORIES

WIRE BATHROOM STORAGE - STAINLESS STEEL

### STAINLESS STEEL STORAGE

#### Screw to wall storage

- Provides valuable additional storage space
- Durable chrome plated corrosion-resistant, stainless steel
- Suitable for use within the wet shower area
- All fixings included
- Incorporating a high quality chrome finish on stainless steel, the wire storage products are suitable for use within any area of the bathroom and all come with a limited ten year guarantee against corrosion.\*\*

**RUST FREE**  
TEN YEAR GUARANTEE

\*\*Please see [www.croydex.com/terms-and-conditions](http://www.croydex.com/terms-and-conditions) for more details on the rust free ten year guarantee.

### SOAP DISH

- Screw to wall fixings included
- Wall plugs and screws included
- Maximum load: 2kg



**RUST FREE**  
TEN YEAR GUARANTEE

CODE QM390641  
DIMENSIONS (HXWXD) 36.5 x 127 x 103mm  
Packaging: Card wrap and euro slot

### CORNER SOAP DISH

- Screw to wall fixings included
- Wall plugs and screws included
- Maximum load: 2kg



**RUST FREE**  
TEN YEAR GUARANTEE

CODE QM390941  
DIMENSIONS (HXWXD) 36 x 190 x 120mm  
Packaging: Card wrap and euro slot

### COSMETIC BASKET

- Screw to wall fixings included
- Wall plugs and screws included
- Maximum load: 5kg



**RUST FREE**  
TEN YEAR GUARANTEE

CODE QM390641  
DIMENSIONS (HXWXD) 51.5 x 250 x 125mm  
Packaging: Card wrap and euro slot

### CORNER BASKET

- Screw to wall fixings included
- Wall plugs and screws included
- Maximum load: 5kg

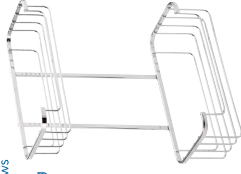


**RUST FREE**  
TEN YEAR GUARANTEE

CODE QM390941  
DIMENSIONS (HXWXD) 61 x 280 x 165mm  
Packaging: Card wrap and euro slot

### TWO TIER COSMETIC BASKET

- Screw to wall fixings included
- Wall plugs and screws included
- Maximum load: 5kg



**RUST FREE**  
TEN YEAR GUARANTEE

CODE QM390541  
DIMENSIONS (HXWXD) 316 x 250 x 128mm  
Packaging: Card wrap and euro slot

### SMALL TWO TIER CORNER BASKET

- Screw to wall fixings included
- Wall plugs and screws included
- Maximum load: 5kg
- Additional hooks for hanging items.



**RUST FREE**  
TEN YEAR GUARANTEE

CODE QM390841  
DIMENSIONS (HXWXD) 281 x 225 x 140mm  
Packaging: Card wrap and euro slot

### MEDIUM TWO TIER CORNER BASKET

- Screw to wall fixings included
- Wall plugs and screws included
- Maximum load: 5kg
- Additional hooks for hanging items.

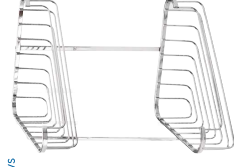


**RUST FREE**  
TEN YEAR GUARANTEE

CODE QM390241  
DIMENSIONS (HXWXD) 327 x 250 x 147mm  
Packaging: Card wrap and euro slot

### LARGE TWO TIER CORNER BASKET

- Screw to wall fixings included
- Wall plugs and screws included
- Maximum load: 5kg

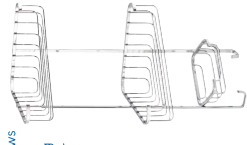


**RUST FREE**  
TEN YEAR GUARANTEE

CODE QM393841  
DIMENSIONS (HXWXD) 303 x 280 x 165mm  
Packaging: Card wrap and euro slot

### THREE TIER CORNER BASKET

- Screw to wall fixings included
- Wall plugs and screws included
- Maximum load: 5kg
- Additional hooks for hanging items.



**RUST FREE**  
TEN YEAR GUARANTEE

CODE QM392841  
DIMENSIONS (HXWXD) 482 x 280 x 165mm  
Packaging: Card wrap and euro slot

### HOOK OVER THREE TIER BASKET

- Maximum load: 5kg
- Additional hooks for hanging items.

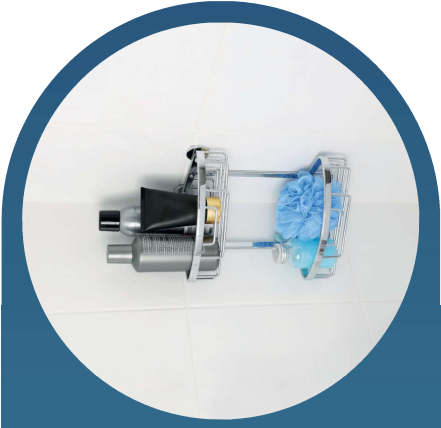


**RUST FREE**  
TEN YEAR GUARANTEE

CODE QM394341  
DIMENSIONS (HXWXD) 632 x 250 x 184mm  
Packaging: Card wrap and euro slot

## WALL MOUNTED ACCESSORIES

WIRE BATHROOM STORAGE - SLIMLINE ALUMINIUM



### SLIMLINE ALUMINIUM STORAGE

Screw to wall storage

- Provides valuable additional storage space
- Chrome plated
- Suitable for use within the wet shower area
- All fixings included
- Incorporating a high quality chrome finish on aluminium, the wire mesh produces a rust free finish within any area of the bathroom and all come with a limited lifetime guarantee against corrosion.\*\*

**RUST FREE**  
LIFE TIME GUARANTEE

\*\*\*Please see [www.croydex.com/terms-and-conditions](http://www.croydex.com/terms-and-conditions) for more details on the rust free lifetime guarantee.

### COSMETIC BASKET

- Screw to wall fixings included
- Wall plugs and screws included
- Maximum load: 5kg



**RUST FREE**  
LIFE TIME GUARANTEE

CODE	DIMENSIONS (HXWXD)
QM780641	92.25 x 250 x 125.5mm

Packaging: Card wrap and euro slot.

### TWO TIER BASKET

- Screw to wall fixings included
- Wall plugs and screws included
- Maximum load: 5kg



**RUST FREE**  
LIFE TIME GUARANTEE

CODE	DIMENSIONS (HXWXD)
QM786041	262.25 x 180 x 106mm

Packaging: Card wrap and euro slot.

### CORNER BASKET

- Screw to wall fixings included
- Wall plugs and screws included
- Maximum load: 5kg



**RUST FREE**  
LIFE TIME GUARANTEE

CODE	DIMENSIONS (HXWXD)
QM785941	92.25 x 277.5 x 192.5mm

Packaging: Card wrap and euro slot.

### TWO TIER CORNER BASKET

- Screw to wall fixings included
- Wall plugs and screws included
- Maximum load: 5kg



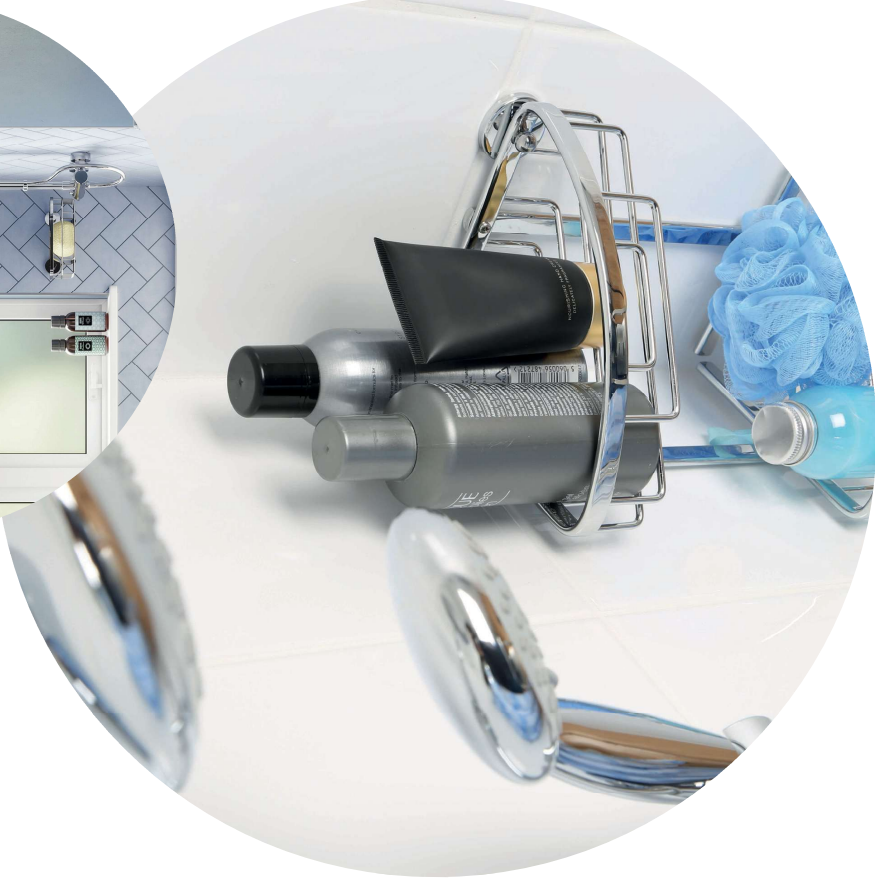
**RUST FREE**  
LIFE TIME GUARANTEE

CODE	DIMENSIONS (HXWXD)
QM783941	250 x 215 x 165.5mm

Packaging: Card wrap and euro slot.

## WALL MOUNTED ACCESSORIES

WIRE BATHROOM STORAGE - SLIMLINE ALUMINIUM



## WALL MOUNTED ACCESSORIES

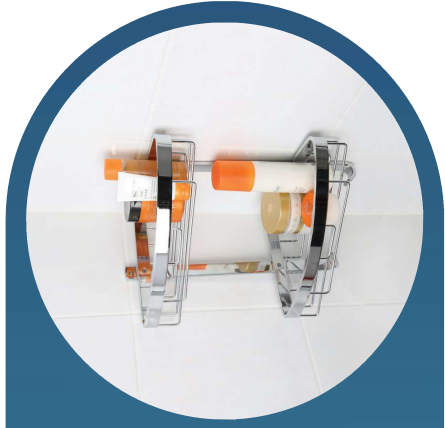
### WIRE BATHROOM STORAGE - ALUMINIUM

#### SCREW TO WALL STORAGE

- Provides valuable additional storage space
- Chrome plated and matt black aluminium construction
- Suitable for use within the 'wet' shower area
- All fixings included
- Incorporating a high quality chrome finish on aluminium, the rust free wireware products are suitable for use within any area of the bathroom and all come with a limited lifetime guarantee against corrosion.\*\*\*



\*\*\* Please see [www.croydex.com/terms-and-conditions](http://www.croydex.com/terms-and-conditions) for more details on the rust free lifetime guarantee.



## WALL MOUNTED ACCESSORIES

### WIRE BATHROOM STORAGE - ALUMINIUM

#### CORNER BASKET

- Screw to wall fixings included
- Wall plugs and screws included
- Maximum load: 5kg



NEW



CODE	QMW75921
DIMENSIONS (H X W X D)	60 x 311 x 208.5mm
Packaging: Card wrap and euro slot.	

#### LARGE BASKET

- Screw to wall fixings included
- Wall plugs and screws included
- Maximum load: 5kg
- Additional hooks for hanging items.



NEW



CODE	QMW70321
DIMENSIONS (H X W X D)	140 x 255.5 x 126.5mm
Packaging: Card wrap and euro slot.	

#### CORNER BASKET

- Screw to wall fixings included
- Wall plugs and screws included
- Maximum load: 5kg



CODE	QMW75941
DIMENSIONS (H X W X D)	60 x 311 x 208.5mm
Packaging: Card wrap and euro slot.	

#### LARGE BASKET

- Screw to wall fixings included
- Wall plugs and screws included
- Maximum load: 5kg
- Additional hooks for hanging items.



CODE	QMW70341
DIMENSIONS (H X W X D)	140 x 255.5 x 126.5mm
Packaging: Card wrap and euro slot.	

#### LARGE TWO TIER BASKET

- Screw to wall fixings included
- Wall plugs and screws included
- Maximum load: 5kg
- Additional hooks for hanging items.



CODE	QMW70841
DIMENSIONS (H X W X D)	390 x 255.5 x 126.5mm
Packaging: Card wrap and euro slot.	

#### LARGE TWO TIER CORNER BASKET

- Screw to wall fixings included
- Wall plugs and screws included
- Maximum load: 5kg



CODE	QMW72841
DIMENSIONS (H X W X D)	390 x 311.5 x 208.5mm
Packaging: Card wrap and euro slot.	

#### LARGE TWO TIER BASKET

- Screw to wall fixings included
- Wall plugs and screws included
- Maximum load: 5kg
- Additional hooks for hanging items.



NEW



CODE	QMW70821
DIMENSIONS (H X W X D)	390 x 255.5 x 126.5mm
Packaging: Card wrap and euro slot.	

#### LARGE TWO TIER CORNER BASKET

- Screw to wall fixings included
- Wall plugs and screws included
- Maximum load: 5kg
- Additional hooks for hanging items.



NEW



CODE	QMW72821
DIMENSIONS (H X W X D)	390 x 311.5 x 208.5mm
Packaging: Card wrap and euro slot.	

FOR CO-ORDINATING ACCESSORIES

SEE PAGE 109



# WALL MOUNTED ACCESSORIES

## FLEXI-FIX™ - X-PLATE

### THREE WAYS TO FIX

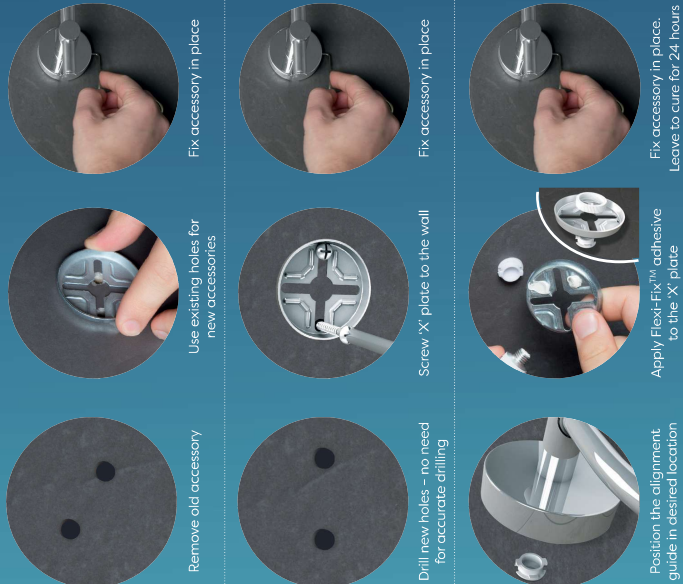
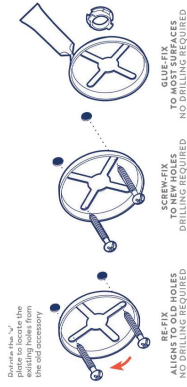
The Flexi-Fix™ range of wall mounted products feature a unique 'X' plate which can either be fitted using existing fixing holes or screwed to new ones.

Alternatively, the patented brackets can be glued to most surfaces, including uneven walls or shiny tiles, eliminating the need for drilling completely. With three ways to fix, there's an option for everyone.

**1. RE-FIX**  
Use existing holes for new accessories.

**2. SCREW OR GLUE**  
Apply Flexi-Fix™ adhesive to the 'X' plate.

**3. MOUNT**  
Fix accessory in place.



**RE-FIX**  
Aligns to old holes

**SCREW-FIX**  
To new holes

**GLUE-FIX**  
To most surfaces

# WALL MOUNTED ACCESSORIES

## FLEXI-FIX™ - WIRE BATHROOM STORAGE

### FLEXI-FIX™ STORAGE

- Provides valuable additional storage space
- Durable chrome plated mild steel
- Fixing brackets slide to adjust to the fixing centres if replacing old baskets
- All fixings included
- Incorporating a special treatment, the rust free wire-ware products are suitable for use within any area of the bathroom and all come with a limited five year guarantee against corrosion.\*



\*Please see [www.croydex.com/terms-and-conditions](http://www.croydex.com/terms-and-conditions) for more details on the rust free five year guarantee.



### BROCKHAM FLEXI-FIX™ COSMETIC BASKET

- Screw to wall fixings included
- Wall plugs and screws included
- Maximum load: 5kg



CODE	DIMENSIONS (HXWXD)
QM800641	80 x 260 x 130mm
Packaging: Full colour box	

### BROCKHAM FLEXI-FIX™ CORNER BASKET

- Screw to wall fixings included
- Wall plugs and screws included
- Maximum load: 5kg



CODE	DIMENSIONS (HXWXD)
QM805941	82 x 290 x 165mm
Packaging: Full colour box	

### BROCKHAM FLEXI-FIX™ TWO TIER CORNER BASKET

- Screw to wall fixings included
- Wall plugs and screws included
- Maximum load: 5kg



CODE	DIMENSIONS (HXWXD)
QM805841	345 x 290 x 165mm
Packaging: Full colour box	

### BROCKHAM FLEXI-FIX™ TWO TIER COSMETIC BASKET

- Screw to wall fixings included
- Wall plugs and screws included
- Maximum load: 5kg



CODE	DIMENSIONS (HXWXD)
QM800541	359 x 260 x 130mm
Packaging: Full colour box	

### BROCKHAM TWO TIER HOOK OVER BASKET

- Maximum load: 5kg



CODE	DIMENSIONS (HXWXD)
QM802841	750 x 260 x 130mm
Packaging: Full colour box	

# WALL MOUNTED ACCESSORIES

## FLEXI-FIX™ - CAMBERWELL RANGE



- Durable zinc alloy construction
- Frosted glass accessories
- High quality chrome plated finish
- Contemporary soft-square design
- Flexi-Fix™ accessories – simply screw or glue
- Brackets adjust on towel rail and glass shelf to accommodate existing screw centres.
- Easy to fit
- All fixings included



Double Robe Hook QM924941



Tumbler & Holder QM921941  
\*Tumbler - Frosted Glass



Soap Dish & Holder QM921941  
\*Soap Dish - Frosted Glass



Towel Rail QM922741



Towel Ring QM921541



Toilet Roll Holder QM921141



Double Towel Rail QM922941



Glass Shelf QM921441  
\*Clear Glass



Toilet Brush & Holder QM922041

# WALL MOUNTED ACCESSORIES

## FLEXI-FIX™ - 1919 CROYDEX HERITAGE RANGE



- Durable zinc alloy construction
- White ceramic accessories
- High quality chrome plated finish
- Flexi-Fix™ accessories – simply screw or glue
- Brackets adjust on towel rail and glass shelf to accommodate existing screw centres.
- Easy to fit
- All fixings included



Toilet Roll Holder QM501141



Spindle Toilet Roll Holder QM504441



Towel Ring QM501541



Double Robe Hook QM501741



Tilt Mirror QM301041  
\*Bevelled  
\*Does not include the glue fix method  
\*Safety Backed Glass



Glass Shelf QM501441  
\*Clear Glass



Towel Rail QM502741



Soap Dish & Holder QM501941  
\*Soap Dish - Ceramic



Tumbler & Holder QM501841  
\*Tumbler - Ceramic



Spindle Toilet Roll Holder QM504441

CODE	ACCESSORY	DIMENSIONS (HXWXD)
QM501841	Tumbler & Holder	115 x 142 x 102mm
QM501041	Tilt Mirror*	450 x 340 x 105mm
QM301141	Toilet Roll Holder	120 x 179 x 84mm
QM501941	Soap Dish & Holder	70 x 90 x 84mm
QM502741	Towel Rail	70 x 670 x 84mm
QM304441	Spindle Toilet Roll Holder	70 x 230 x 85mm
QM501741	Double Robe Hook	70 x 90 x 84mm
QM501441	Glass Shelf	90 x 590 x 130mm
QM301541	Towel Ring	160 x 243 x 84mm

Packaging: Full colour box

# WALL MOUNTED ACCESSORIES

## FLEXI-FIX™ - ROMSEY RANGE



- Durable zinc alloy construction
- Clear glass accessories
- High quality chrome plated finish
- Flexi-Fix™ accessories – simply screw or glue
- Brackets adjust on towel rail and glass shelf to accommodate existing screw centres.
- Easy to fit
- Mirror has bevelled edge
- All fixings included
- See page 101 for co-ordinating wire storage baskets



Toilet Roll Holder QM741141



Soap Dish & Holder QM741941  
\*Soap Dish - Clear Glass



Robe Hook QM741741



Towel Ring QM741541



Tumbler & Holder QM741841  
\*Tumbler - Clear Glass



Towel Rail QM742741



Glass Shelf QM741441  
\*Clear Glass

# WALL MOUNTED ACCESSORIES

## FLEXI-FIX™ - PENDLE RANGE



- Durable zinc alloy construction
- Clear glass accessories
- High quality chrome plated finish
- Flexi-Fix™ accessories – simply screw or glue
- Brackets adjust on towel rail and glass shelf to accommodate existing screw centres.
- Mirror has bevelled edge
- Easy to fit
- All fixings included
- See page 101 for co-ordinating wire storage baskets



Toilet Roll Holder with Anti-Slip Shelf QM414541



Toilet Roll Holder QM411141



Soap Dish & Holder QM411941  
\*Soap Dish - Clear Glass



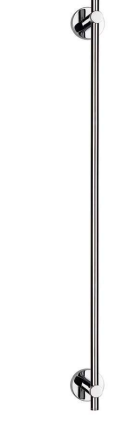
Robe Hook QM411741



Towel Ring QM411541



Tumbler & Holder QM411841  
\*Tumbler - Clear Glass



Towel Rail QM412741



Glass Shelf QM411441  
\*Clear Glass



Tilt Mirror QM411041  
\*Does not include the glue fix fixing method  
\*Safety Backed Glass



Scop Basket QM411641

CODE	ACCESSORY	DIMENSIONS (HXWXD)
QM414541	Toilet Roll Holder with Anti-Slip Shelf	155 x 106 x 117mm
QM411841	Tumbler & Holder	99 x 68 x 108mm
QM411041	Tilt Mirror*	380 x 390 x 90mm
QM411141	Toilet Roll Holder	106 x 135 x 42mm
QM411941	Soap Dish & Holder	54 x 108 x 128mm
QM412741	Towel Rail	54 x 670 x 73mm
QM411541	Towel Ring	170 x 200 x 42mm
QM411741	Robe Hook	54 x 54 x 47mm
QM411441	Glass Shelf	54 x 616 x 134mm
QM411641	Scop Basket	54 x 130 x 120mm

Packaging: Full colour box

# WALL MOUNTED ACCESSORIES

## FLEXI-FIX™ - WORCESTER RANGE



- Durable zinc alloy construction
- Clear glass accessories
- High quality chrome plated finish
- Flexi-Fix™ accessories – simply screw or glue
- Brackets adjust on towel rail and glass shelf to accommodate existing screw centres.
- Mirror has bevelled edge
- Easy to fit
- All fixings included



Toilet Roll Holder QM461141



Tumbler & Holder QM461941  
\*Tumbler - Clear Glass



Soap Dish & Holder QM461941  
\*Soap Dish - Clear Glass



Towel Ring QM461541



Double Robe Hook QM461741



Tilt Mirror QM461041  
\*Does not include gluing method  
\*Safety Backed Glass



Towel Rail QM462741



Glass Shelf QM461441  
\*Clear Glass

# WALL MOUNTED ACCESSORIES

## FLEXI-FIX™ - CHESTER RANGE



- Durable zinc alloy construction
- Clear glass accessories
- High quality chrome plated finish
- Flexi-Fix™ accessories – simply screw or glue
- Brackets adjust on towel rail and glass shelf to accommodate existing screw centres.
- Mirror has bevelled edge
- Easy to fit
- All fixings included



Toilet Roll Holder with Anti-Slip Shelf QM44541



Tumbler & Holder QM441941  
\*Tumbler - Clear Glass



Soap Dish & Holder QM441941  
\*Soap Dish - Clear Glass



Robe Hook QM441741



Towel Ring QM441541



Soap Basket QM441641



Tilt Mirror QM441041  
\*Does not include gluing method  
\*Safety Backed Glass



Towel Rail QM442741



Glass Shelf QM441441  
\*Clear Glass

CODE	ACCESSORY	DIMENSIONS (HXWXD)
QM44541	Toilet Roll Holder with Anti-Slip Shelf	155 x 106 x 117mm
QM441941	Tumbler & Holder	97 x 67.5 x 109mm
QM441041	Tilt Mirror*	364 x 364 x 87.5mm
QM441941	Toilet Roll Holder	54 x 169 x 78.5mm
QM441941	Soap Dish & Holder	54 x 107.5 x 130mm
QM442741	Towel Rail	54 x 670 x 72.5mm
QM441541	Towel Ring	168.75 x 153 x 58mm
QM441741	Robe Hook	54 x 54 x 47.5mm
QM441441	Glass Shelf	54 x 617 x 134mm
QM441641	Soap Basket	54 x 130 x 120mm
Packaging: Full colour box		

# WALL MOUNTED ACCESSORIES

## FLEXI-FIX™ - EPSOM RANGE



- Durable zinc alloy construction
- Clear glass accessories
- High quality chrome plated finish
- Flexi-Fix™ accessories – simply screw or glue
- Brackets adjust on towel rail and glass shelf to accommodate existing screw centres.
- Easy to fit
- Mirror has bevelled edge
- All fixings included
- See page 101 for co-ordinating wire storage baskets



Tilt Mirror QM41041  
\*Does not include the glue fix (fixing method)  
\*Safety Backed Glass



Tumbler & Holder QM481941  
\*Tumbler - Clear Glass



Soap Dish & Holder QM481941  
\*Soap Dish - Clear Glass



Toilet Roll Holder QM481141



Robe Hook QM481741



Towel Rail QM482741



Glass Shelf QM481441  
\*Toughened Glass

# WALL MOUNTED ACCESSORIES

## FLEXI-FIX™ - EPSOM BLACK RANGE



- Durable zinc alloy construction
- Frosted glass accessories
- Flexi-Fix™ accessories – simply screw or glue
- Brackets adjust on towel rail and glass shelf to accommodate existing screw centres.
- Easy to fit
- All fixings included
- See page 99 for co-ordinating wire storage baskets



Tumbler & Holder QM481921  
\*Tumbler - Frosted Glass



Soap Dish & Holder QM481921  
\*Soap Dish - Frosted Glass



Towel Rail QM482721



Robe Hook QM481721



Glass Shelf QM481421  
\*Frosted Glass

CODE	ACCESSORY	DIMENSIONS (HXWXDXD)
QM481841	Tumbler & Holder	96 x 68 x 106mm
QM411041	Tilt Mirror*	380 x 384 x 87.5mm
QM481141	Toilet Roll Holder	54 x 162 x 83.5mm
QM481941	Soap Dish & Holder	54 x 107.5 x 130mm
QM482741	Towel Rail	54 x 670 x 77.5mm
QM481541	Towel Bar	54 x 270.5 x 81.5mm
QM481741	Robe Hook	54 x 54 x 50.5mm
QM481441	Glass Shelf	60 x 590 x 135.5mm

Packaging: Full colour box

CODE	ACCESSORY	DIMENSIONS (HXWXDXD)
QM481821	Tumbler & Holder	97 x 67.5 x 107.5mm
QM481121	Toilet Roll Holder	54 x 162 x 83.5mm
QM481921	Soap Dish & Holder	54 x 107.5 x 130mm
QM482721	Towel Rail	54 x 670 x 77.5mm
QM481521	Towel Bar	54 x 270.5 x 81.5mm
QM481721	Robe Hook	54 x 54 x 50.5mm
QM481421	Glass Shelf	60 x 590 x 135.5mm

Packaging: Full colour box

# WALL MOUNTED ACCESSORIES

## FLEXI-FIX™ - CHEADLE RANGE



- Durable zinc alloy construction
- Frosted glass accessories
- High quality chrome plated finish
- Flexi-Fix™ accessories – simply screw or glue
- Brackets adjust on towel rails and glass shelf to accommodate existing screw centres.
- Easy to fit
- Mirror has bevelled edge
- All fixings included



Tumbler & Holder, QM511941  
\*Tumbler - Frosted Glass



Tilt Mirror, QM541041  
\*Does not include the glue fix fixing method  
\*Safety Backed Glass



Toilet Roll Holder, QM511141



Soap Dish & Holder, QM511941  
\*Soap Dish - Frosted Glass



Towel Rail, QM512741



Towel Ring, QM511541



Double Robe Hook, QM511741



Glass Shelf, QM511441  
\*Clear Glass

CODE	ACCESSORY	DIMENSIONS (HXWXD)
QM511641	Tumbler & Holder	96 x 81 x 102mm
QM441041	Tilt Mirror*	380 x 380 x 90mm
QM511141	Toilet Roll Holder	54 x 190 x 66mm
QM511941	Soap Dish & Holder	54 x 115 x 102mm
QM512741	Towel Rail	54 x 670 x 65mm
QM511541	Towel Ring	154 x 225 x 58mm
QM511741	Double Robe Hook	54 x 87 x 48mm
QM511441	Glass Shelf	54 x 612 x 135mm
Packaging: Full colour box		

# WALL MOUNTED ACCESSORIES

## FLEXI-FIX™ - METRA RANGE



- Durable zinc alloy construction
- Ceramic accessories
- Flexi-Fix™ accessories – simply screw or glue
- Brackets adjust on towel rails and glass shelf to accommodate existing screw centres.
- Easy to fit
- All fixings included
- See page 101 for co-ordinating wire storage baskets



Tumbler & Holder, QM541841  
\*Tumbler - Ceramic



Tilt Mirror, QM541041  
\*Bevelled  
\*Does not include the glue fix fixing method  
\*Safety Backed Glass



Toilet Roll Holder, QM541141



Soap Dish & Holder, QM541941  
\*Soap Dish - Ceramic



Towel Rail, QM542741



Towel Ring, QM541541



Glass Shelf, QM541441  
\*Toughened Glass

CODE	ACCESSORY	DIMENSIONS (HXWXD)
QM541841	Tumbler & Holder	120 x 137 x 99mm
QM541041	Tilt Mirror*	458 x 458 x 98mm
QM541141	Toilet Roll Holder	103 x 180 x 90mm
QM541941	Soap Dish & Holder	120 x 165 x 85mm
QM542741	Towel Rail	80 x 670 x 60mm
QM541541	Towel Ring	152 x 236 x 80mm
QM541741	Double Robe Hook	85 x 115 x 70mm
QM541441	Glass Shelf	125 x 638 x 78mm
Packaging: Full colour box		

# WALL MOUNTED ACCESSORIES

## FLEXI-FIX™ - SHOREDITCH RANGE



- Durable zinc alloy construction
- High quality chrome plated finish
- Flexi-Fix accessories – simply screw or glue
- Brackets adjust on towel rails and glass shelf to accommodate existing screw centres.
- Frosted glass accessories
- Easy to fit
- All fixings included



Tumbler & Holder QM591941  
\*Tumbler - Frosted Glass



Soap Dispenser & Holder QM591941  
\*Soap Dispenser - Frosted Glass



Toilet Roll Holder QM591141



Soap Dish & Holder QM591441  
\*Soap Dish - Frosted Glass



Towel Ring QM591541



Towel Rail QM592741



Glass Shelf QM591441  
\*Toughened Frosted Glass

# WALL MOUNTED ACCESSORIES

## FLEXI-FIX™ - GROSVENOR CHROME RANGE



- Solid brass construction with chrome plated finish
- Ceramic accessories
- Flexi-Fix™ accessories – simply screw or glue
- Brackets adjust on towel rail and glass shelf to accommodate existing screw centres.
- Easy to fit
- All fixings included



Toilet Brush Holder QM702441  
\*Toilet Brush Holder - Ceramic



Tumbler & Holder QM701941  
\*Tumbler - Ceramic



Soap Dish & Holder QM701941  
\*Soap Dish - Ceramic



Toilet Roll Holder QM701141



Double Robe Hook QM701741



Spindle Toilet Roll Holder QM704441



Towel Ring QM701541



Tilt Mirror QM701041  
\*Non bevelled  
\*Safety Backed Glass

\*Does not include the glue fix fixing method



Towel Rail QM702741

Glass Shelf QM701441  
\*Toughened Glass



Glass Corner Shelf QM705941  
\*Toughened Glass

CODE	ACCESSORY	DIMENSIONS (HxWxD)
QM701841	Tumbler & Holder	90 x 85 x 120mm
QM701041	Tilt Mirror*	515 x 340 x 65mm
QM702441	Toilet Brush	380 x 120 x 120mm
QM701941	Soap Dish & Holder	80 x 130 x 130mm
QM702741	Towel Rail	80 x 672 x 75mm
QM701441	Glass Shelf	80 x 590 x 125mm
QM701141	Toilet Roll Holder	110 x 170 x 70mm
QM701741	Double Robe Hook	80 x 80 x 65mm
QM705941	Glass Corner Shelf	80 x 365 x 260mm
QM704441	Spindle Toilet Roll Holder	75 x 240 x 75mm
QM701541	Towel Ring	240 x 215 x 75mm

Packaging: White box with colour label

CODE	ACCESSORY	DIMENSIONS (HxWxD)
QM596641	Soap Dispenser	200 x 68 x 103mm
QM591841	Tumbler & Holder	115 x 70 x 110mm
QM591141	Toilet Roll Holder	52 x 180 x 90mm
QM591941	Soap Dish & Holder	52 x 110 x 130mm
QM592741	Towel Rail	52 x 670 x 90mm
QM591541	Towel Ring	170 x 230 x 70mm
QM591741	Double Robe Hook	52 x 90 x 55mm
QM591441	Glass Shelf	50 x 590 x 130mm

Packaging: Full colour box

## WALL MOUNTED ACCESSORIES FLEXI-FIX™ - GROSVENOR GOLD RANGE



- Solid brass with antique gold effect finish
- Ceramic accessories
- Flexi-Fix™ accessories – simply screw or glue
- Brackets adjust on towel rails and glass shelf to accommodate existing screw centres.
- Easy to fit
- All fixings included



Toilet Brush QM702403  
\*Toilet Brush Holder - Ceramic



Tumbler & Holder QM701803  
\*Tumbler - Ceramic



Soap Dish & Holder QM701903  
\*Soap Dish - Ceramic



Toilet Roll Holder QM701103



Spindle Toilet Roll Holder QM704403



Towel Ring QM701503



Tilt Mirror QM701003  
\*Not bevelled  
\*Safety Backed Glass

\*Does not include the glue fix fitting method



Towel Rail QM702203



Glass Shelf QM701403  
\*Toughened Glass



Glass Corner Shelf QM705903

CODE	ACCESSORY	DIMENSIONS (HXWXD)
QM701803	Tumbler & Holder	90 x 85 x 120mm
QM701003	Tilt Mirror*	515 x 340 x 63mm
QM702403	Toilet Brush	380 x 120 x 120mm
QM701903	Soap Dish & Holder	80 x 130 x 130mm
QM702703	Towel Rail	80 x 670 x 75mm
QM701403	Glass Shelf	80 x 590 x 125mm
QM701103	Toilet Roll Holder	110 x 170 x 70mm
QM701703	Double Robe Hook	80 x 80 x 65mm
QM705903	Glass Corner Shelf	80 x 365 x 260mm
QM704403	Spindle Toilet Roll Holder	75 x 240 x 75mm
QM701503	Towel Ring	240 x 215 x 75mm

Packaging: White box with colour label

## WALL MOUNTED ACCESSORIES BRITANNIA RANGE

### BRITANNIA SMALL ROUND MAGNIFYING MIRROR

- 2 x Magnification mirror
- Adjustable arm and mirror tilt function allows greater flexibility
- 150mm Diameter
- **This item does not include the Flexi-Fix™ fitting**
- All fixings included



CODE DIMENSIONS (HXWXD)

QM103041 280 x 205 x 30mm

Packaging: White box with black & white label

### BRITANNIA RETRACTABLE CLOTHES LINE

- Stainless steel construction
- 2450mm Cord length
- **This item does not include the Flexi-Fix™ fitting**
- All fixings included



CODE DIMENSIONS (HXWXD)

QM108641 92 x 92 x 47.5mm

Packaging: White box with black & white label

## WALL MOUNTED ACCESSORIES FLEXI-FIX™ - SET

### MEDWAY 3 PIECE SET ROBE HOOK, TOILET ROLL HOLDER, TOWEL RING



- Durable zinc alloy construction with chrome plated finish
- Flexi-Fix™ accessories - simply screw or glue
- Easy to fit
- All fixings included



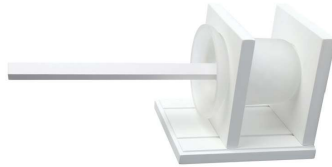
CODE FINISH

QM1619941 Chrome

Packaging: Open box

# WALL MOUNTED ACCESSORIES PORTLAND RANGE

- Elegant tongue and groove effect
- White painted pine wood
- Ceramic accessories
- Wipe clean and moisture-resistant
- Concealed fixings
- All fixings included



Toilet Brush WA992922



Tumbler & Holder WA991922



Soap Dish & Holder WA991922



Double Robe Hook WA992822



Towel Ring WA991522



Spindle Toilet Roll Holder WA991122



Mirror WA991422



Towel Rail WA992622



Shelf WA991422

# WALL MOUNTED ACCESSORIES SUTTON RANGE

- Durable zinc alloy construction
- High quality chrome plated finish
- Clear glass accessories
- Exposed fixings
- All fixings included



Tumbler & Holder QM731841  
\*Tumbler - Clear Glass



Spindle Toilet Roll Holder QM731141



Soap Dish QM731941



Toilet Roll Holder QM731241



Towel Ring QM731541



Robe Hook QM731741



Towel Rail QM732641



Glass Shelf QM731441  
\*Toughened Glass

CODE	ACCESSORY	DIMENSIONS (HXWXDX)
WA991822	Tumbler & Holder	80 x 160 x 135mm
WA992722	Mirror	600 x 400 x 15mm
WA992922	Toilet Brush	360 x 145 x 105mm
WA991922	Soap Dish & Holder	70 x 130 x 110mm
WA992622	Towel Rail	70 x 600 x 100mm
WA991522	Towel Ring	180 x 155 x 70mm
WA992822	Double Robe Hook	70 x 195 x 65mm
WA991422	Shelf	70 x 600 x 110mm
WA991122	Toilet Roll Holder	70 x 200 x 100mm
Packaging: Full colour box		

CODE	ACCESSORY	DIMENSIONS (HXWXDX)
QM731141	Spindle Toilet Roll Holder	50 x 150 x 71mm
QM731841	Tumbler & Holder	95 x 100 x 60mm
QM731241	Toilet Roll Holder	102 x 168 x 42.5mm
QM731941	Soap Dish	24.25 x 100 x 61mm
QM732641	Towel Rail	50 x 482 x 71mm
QM731541	Towel Ring	168 x 150 x 42.5mm
QM731741	Robe Hook	41 x 33 x 35mm
QM731441	Glass Shelf	50 x 500 x 115mm
Packaging: Blister pack with euro slot		

# WALL MOUNTED ACCESSORIES

## HAMPSTEAD RANGE

- Durable zinc alloy construction
- High quality chrome plated finish
- Frosted Glass Accessories
- Concealed fixings
- All fixings included



Soap Dispenser & Holder QM646641  
\*Soap Dispenser - Frosted Glass



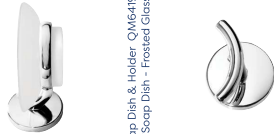
Tumbler & Holder QM641941  
\*Tumbler - Frosted Glass



Tilt Mirror QM641041



Toilet Brush & Holder QM642441  
\*Holder - Frosted Glass



Soap Dish & Holder QM641941  
\*Soap Dish - Frosted Glass



Towel Rail QM642641



Toilet Roll Holder QM641141



Towel Ring QM641541

CODE	ACCESSORY	DIMENSIONS (HXWXD)
QM646641	Soap Dispenser	167 x 73 x 118,5mm
QM641941	Tumbler & Holder	131 x 75 x 118mm
QM641041	Tilt Mirror	480 x 592 x 61mm
QM641941	Soap Dish	60 x 108 x 134,5mm
QM642641	Towel Rail	60 x 535,5 x 50mm
QM642441	Toilet Brush	355 x 100 x 145mm
QM641741	Double Robe Hook	60 x 78 x 54mm
QM641441	Glass Shelf	60 x 596 x 147mm
QM641141	Toilet Roll Holder	60 x 179,5 x 80mm
QM641541	Towel Ring	153 x 230 x 51,5mm

Packaging: Blister pack with euro slot.

Glass Shelf QM641441  
\*Toughened Glass

Double Robe Hook QM641741

# WALL MOUNTED ACCESSORIES

## WESTMINSTER RANGE

- Durable zinc alloy construction
- High quality chrome plated finish
- Frosted Glass Accessories
- Concealed fixings
- All fixings included



Soap Dispenser & Holder QM206641  
\*Soap Dispenser - Frosted Glass



Tumbler & Holder QM201941  
\*Tumbler - Clear Glass



Tilt Mirror QM201041BOX



Toilet Brush QM202441



Soap Dish QM201941



Towel Rail QM202641

Double Towel Rail QM202841



Double Robe Hook QM201741



Toilet Roll Holder QM201141



Towel Ring QM201541

Glass Shelf QM201441  
\*Toughened Glass

CODE	ACCESSORY	DIMENSIONS (HXWXD)
QM206641	Soap Dispenser	155,5 x 99 x 110mm
QM201941	Tumbler & Holder	115 x 120 x 107mm
QM201041BOX	Tilt Mirror	400 x 300 x 79mm
QM201941	Soap Dish	58 x 120 x 107mm
QM202641	Towel Rail	58 x 515 x 79mm
QM202841	Double Towel Rail	71,5 x 510 x 140mm
QM202441	Toilet Brush	375 x 110 x 135,5mm
QM201741	Double Robe Hook	58 x 67 x 60mm
QM201441	Glass Shelf	58 x 500 x 100mm
QM201141	Toilet Roll Holder	105 x 165 x 60mm
QM201541	Towel Ring	180 x 155 x 60mm

Packaging: Blister pack with euro slot.



07

# SEMI-PERMANENT ACCESSORIES

Croydex offers the ultimate solution with this wide range of easy fix bathroom accessories. These products take the hassle out of DIY and provide you with those all important finishing touches.



## SEMI-PERMANENT ACCESSORIES

### STICK 'N' LOCK™

#### EASY INSTALLATION

The self adhesive fixing plate means no tools or fixings are required, simply stick the fixing plate to a clean stable surface. Hang your accessory and secure in place using the screw on cover cap. Wait 24 hours before fully loading to ensure the adhesive is fully cured.

- Sticky pad adheres to most flat, finished surfaces. (It is unsuitable for some unfinished materials such as brick, blockwork, loose, flaky and painted surfaces)
- Screw fix fits to any surface including uneven textured tiles
- Chrome plated mild steel accessories
- Five year rust free guarantee\*
- Easy to remove and clean
- Screw pack and fitting instructions included



#### PEEL

Ensure the mounting surface is thoroughly clean, dry and free from loose flaky material. Peel off the protective film from the self adhesive fixing plate.



#### STICK

Position the self adhesive fixing plate in your chosen location, then firmly press into place to activate the adhesive and fit accessory. Wait 24 hours before fully loading to ensure the adhesive is fully cured.

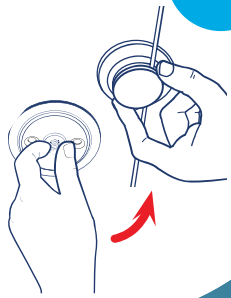


#### FIX

Hang your accessory on the self adhesive fixing plate and secure in place using the screw on cover cap.



**SIMPLY  
PEEL & FIX**



\*For more details on the rust free five year guarantee visit [www.croydex.com/terms-and-conditions](http://www.croydex.com/terms-and-conditions)

SEMI PERMANENT  
ACCESSORIES

## SEMI-PERMANENT ACCESSORIES

### STICK 'N' LOCK™

#### TOWEL RAIL

- Chrome plated mild steel



CODE	DIMENSIONS (HXWXD)
QM292941	95 x 570 x 60mm
Packaging: Full colour box with euro slot.	

#### ROBE HOOK

- Chrome plated mild steel



CODE	DIMENSIONS (HXWXD)
QM291741	96 x 70 x 20mm
Packaging: Cardboard wrap with euro slot.	

#### SOAP BASKET

- Chrome plated mild steel



CODE	DIMENSIONS (HXWXD)
QM293841	96 x 131 x 96mm
Packaging: Cardboard wrap with euro slot.	



#### TOILET ROLL HOLDER

- Chrome plated mild steel



CODE	DIMENSIONS (HXWXD)
QM29141	172 x 175 x 20mm
Packaging: Cardboard wrap with euro slot.	

#### TOWEL RING

- Chrome plated mild steel



CODE	DIMENSIONS (HXWXD)
QM291541	202 x 175 x 20mm
Packaging: Cardboard wrap with euro slot.	



# SEMI-PERMANENT ACCESSORIES

## STICK 'N' LOCK™

### COSMETIC BASKET

- Chrome plated mild steel
- Maximum load: 2.5kg



### CORNER BASKET

- Chrome plated mild steel
- Maximum load: 2.5kg



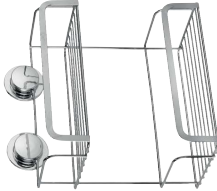
CODE DIMENSIONS (HXWXD)

QM290641 95 x 255 x 153mm

Packaging: Cardboard wrap with euro slot.

### TWO TIER COSMETIC BASKET

- Chrome plated mild steel
- Maximum load: 2.5kg



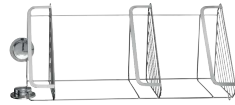
CODE DIMENSIONS (HXWXD)

QM290541 287 x 255 x 153mm

Packaging: Cardboard wrap with euro slot.

### THREE TIER CORNER BASKET

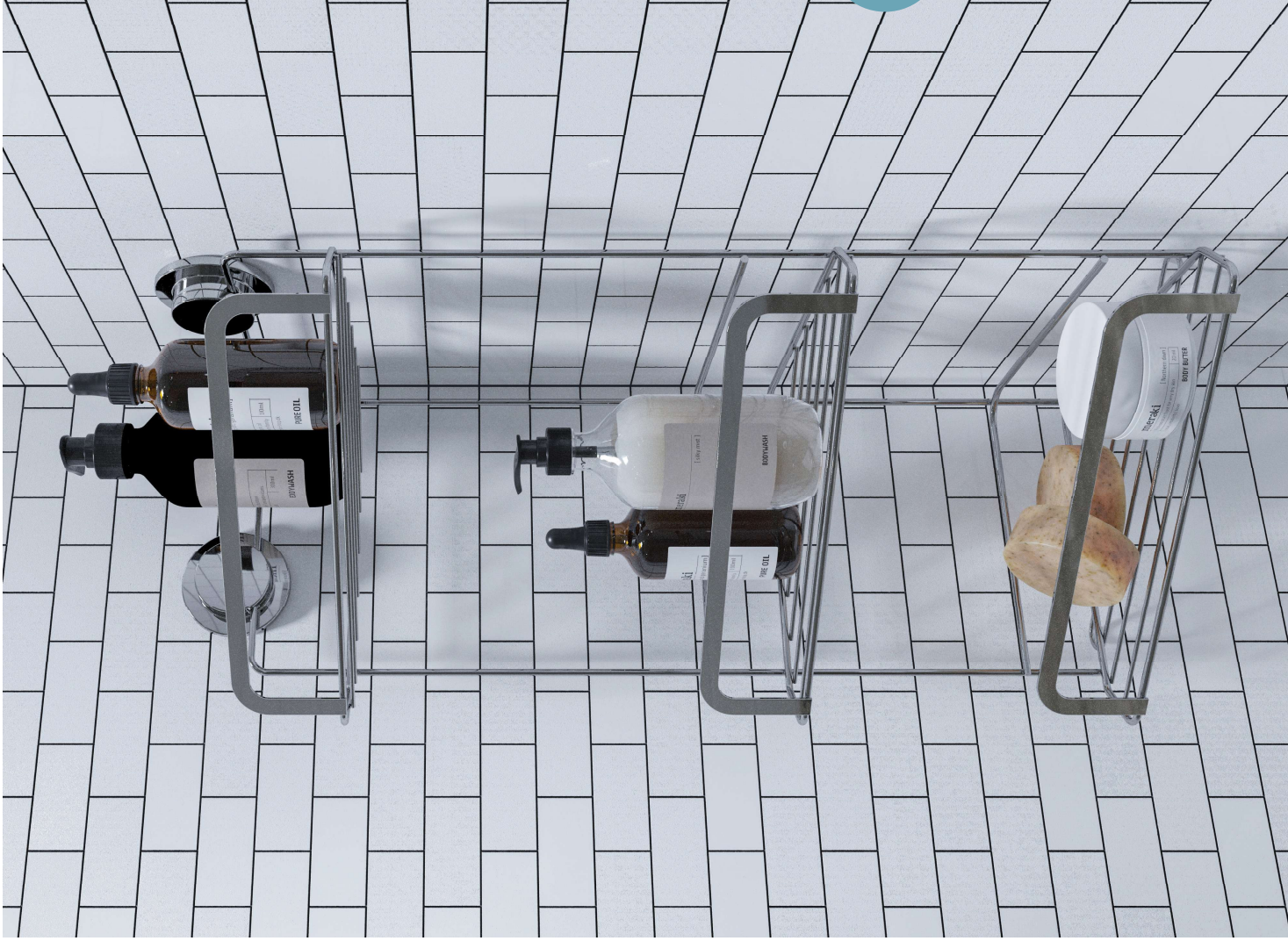
- Chrome plated mild steel
- Maximum load: 2.5kg



CODE DIMENSIONS (HXWXD)

QM290841 523 x 260 x 162mm

Packaging: Cardboard wrap with euro slot.



# SEMI-PERMANENT ACCESSORIES

PRESS 'N' LOCK™

## STRONG SUCTION FIX



- Suction fix fits to smooth, flat, shiny tiles or glass
- Strong suction cups ensure a firm grip
- Crystal clear plastic
- Easy to remove and clean
- Not suitable for use on textured surfaces



LONG BASKET



CORNER BASKET



### CLEAN

Select and clean desired area.

### POSITION

Position product and press the centre of the suction cup to squeeze out the air.

### RELEASE

Pull release tabs for quick removal.



CODE	DIMENSIONS (HXWXDXD)
PA120632	75 x 285 x 117mm
Packaging: Full colour backing card	

CODE	DIMENSIONS (HXWXDXD)
PA120832	75 x 240 x 180mm
Packaging: Full colour backing card	

FOR MORE  
HOMEWARE  
ITEMS

SEE PAGE

160

